

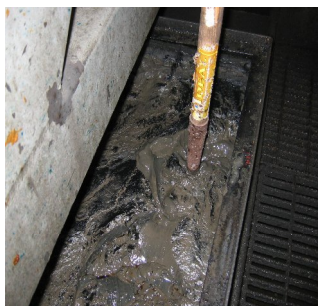
Service Bulletin: MART Power Washer

MART Tech Services

Save Money by Maintaining Your Parts Washer Cleaning Solution

Parts Washers are an integral part of the company's work process, whether they are used for rebuild or in new manufacturing. Cleaning solution management is one of the overlooked maintenance items that when performed can yield significant savings. Reservoir contaminates or sludge in the cleaning solution comes from many sources. Tramp oils, iron sludge, grease, oil, excessive chemical fillers and everyday dirt are some of the common contaminates.

Sludge levels should never come in contact with electric heating elements or heat



exchangers. Heat cannot dissipate through sludge which will cause them to burn out. When sludge levels reach 4-5 inches in depth it must be cleaned out. Sludge

levels can be measured by pushing a tape measure through wash solution down to reservoir floor. Remove tape measure and observe sludge level.

Chemical fillers which are often added can result in the overall cleaning cost. MART Power Kleen chemicals have 100% concentrated active ingredients which remain active longer because they contain NO fillers. As a result, your disposal costs are less because the fillers do not have to be hauled off as sludge. Power Kleen detergents have water softeners and wetting agents built in for fast action in virtually any water condition.

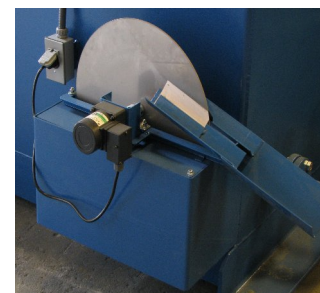
Corrosion-inhibiting additives work to protect metal surfaces long after the washing is completed. Using too much chemical is wasteful and too little will have poor cleaning results, so follow directions on the container for the proper chemical concentration.



Remember the only way to reliably measure chemical concentration is by titrating. Titrating the cleaning solution on a regular basis

determines the amount of cleaning chemical per gallon of water and allows you to decide if additional cleaning chemical is required.

Oil skimmers remove floating oils, greases, sludge, fatty acids and other contaminates to improve the cleaning solution. Contaminates cling to a rotating skimmer wheel and are scrapped off into a container by wiper blades. If your parts washer does not have an oil skimmer, one can easily be retro-fit.



Sludge scrapers are effective at maintaining cleaning solution by removing sludge from the bottom of the reservoir. Using the sludge scraper after a wash cycle lengthens the time between solution cleanout.

For further information please contact
MART Tech Services
M-F 8:00 AM to 5:00 PM (central) U.S.A.
or visit our user **SUPPORT** website
24 hours 7 days a week.

www.marttechservices.com